

# 17122 JETTON ROAD THE PENINSULA



## *An Elegant Full Brick Home on the Golf Course*

- *Spacious, Inviting Rooms*
- *Large Recreation/Bonus Room*
- *2 Story Great Room with Wall of Arched Windows*
  - *Gourmet Kitchen*



**FOR MORE INFORMATION  
ON THIS HOME  
PLEASE CONTACT:**



**LAKE AND LAND**

**LORI IVESTER JACKSON  
LAURA POE**

**OFFICE: 704-439-2220**

**704-439-2221**

**PAGER: 704-581-4234**

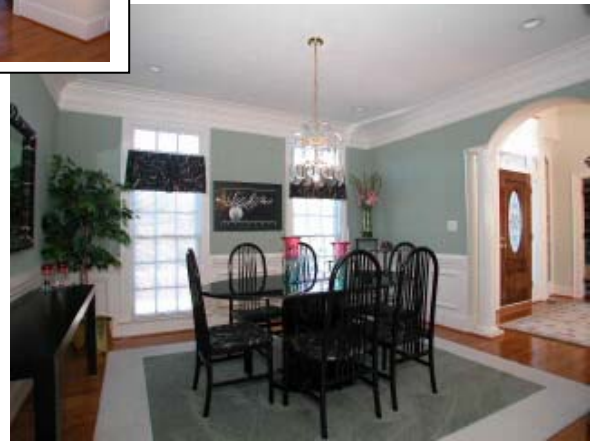
*Two Story Entrance Foyer  
Built-in Shelves, Plant Ledge  
Palladium Window*

*Formal Study/Living Room*

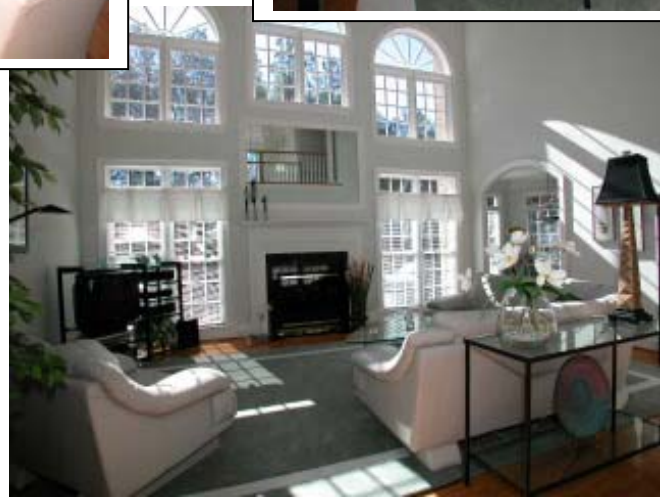
*Built-in Maple Cabinets  
With Shelving  
Chair Rail  
French & Pocket Doors  
Recessed Lighting  
Transom Windows*



*Formal Dining Room  
Arched Doorways  
With custom Molding  
Columns  
Wainscoting with Picture  
Molding  
Recessed Lighting*



*Great Room  
Stately Columns  
Abundance of Windows  
With Incredible Views  
Of 2<sup>nd</sup> Fairway  
French Door To Patio  
Marble Inset Fireplace  
With Gas Logs*



*Dramatic Catwalk Overlooks  
Great Room & Foyer  
Double Tray Ceiling  
Recessed Lighting  
Ceiling Fan  
This Room Opens  
To the Kitchen & Breakfast Room*

